



الصدارة alsadara

Solar Containers Series Design Proposal



www.alsadaraco.com



+966 58 082 0350



tamim.majed@alsadara.com
ezdan.anwer@alsadara.com

alsadara Company, 7th Floor- Parcel 4.07 - Area 4, King Abdullah Financial District (KAFD), Saudi Arabia



Solar PV Container

Overall Configurations



| | | |
|---------|-----------------------------------|---------------|
| Package | Package Products Model | SC40GP-M-160K |
| | Solar Array Capacity (Pmax / kWp) | 161.3 |
| | Total Weight (Tons) | 21.5 |
| | Unfolded Footprint (L*W*H/m) | 91*9.5*0.8 |
| | Folded Footprint (L*W*H/m) | 9.5*2.0*2.1 |
| | Max. Slope Limit | 1% |
| | Orientation | Any azimuth |
| | Complete unfolding Time (mins) | 160 |
| | Complete folding Time (mins) | 100 |
| | Installation Persons | 8 |



| | | |
|---------|-----------------------------------|---------------|
| Package | Package Products Model | SC40HQ-M-200K |
| | Solar Array Capacity (Pmax / kWp) | 204.9 |
| | Total Weight (Tons) | 26.5 |
| | Unfolded Footprint (L*W*H/m) | 102*10.8*0.9 |
| | Folded Footprint (L*W*H/m) | 10.8*2.4*2.2 |
| | Max. Slope Limit | 1% |
| | Orientation | Any azimuth |
| | Complete unfolding Time (mins) | 200 |
| | Complete folding Time (mins) | 120 |
| | Installation Persons | 8 |

折叠式发电储能舱 / Solar ESS Container



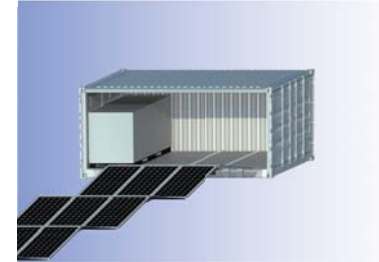
| | | |
|---------|-----------------------------------|----------------|
| Package | Package Products Model | SC08GP-M-18K20 |
| | Rated Power | 20.48kWh |
| | Solar Array Capacity (Pmax / kWp) | 18 |
| | Total Weight (Tons) | 5.5 |
| | Unfolded Footprint (L*W*H/m) | 53*2.2*0.5 |
| | Folded Footprint (L*W*H/m) | 2.2*1.4*1.7 |
| | Max. Slope Limit | 1% |
| | Complete unfolding Time (mins) | 50 |
| | Complete folding Time (mins) | 30 |
| | Installation Persons | 4 |



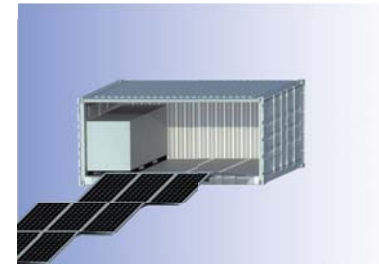
| | | |
|---------|-----------------------------------|----------------|
| Package | Package Products Model | SC10GP-M-30K40 |
| | Rated Power | 40.96kWh |
| | Solar Array Capacity (Pmax / kWp) | 30.7 |
| | Total Weight (Tons) | 6.5 |
| | Unfolded Footprint (L*W*H/m) | 69*2.4*0.8 |
| | Folded Footprint (L*W*H/m) | 2.4*1.5*2.1 |
| | Max. Slope Limit | 1% |
| | Complete unfolding Time (mins) | 60 |
| | Complete folding Time (mins) | 50 |
| | Installation Persons | 4 |

Solar ESS Container

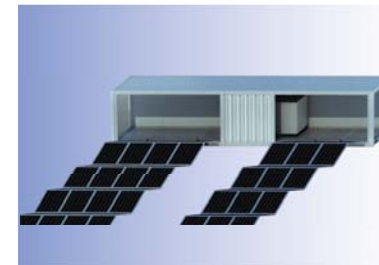
Overall Configurations



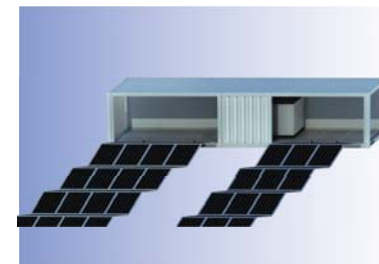
| | | |
|---------|-----------------------------------|-----------------|
| Package | Package Products Model | SC20GP-M-60K215 |
| | Rated Power | 215kWh |
| | Solar Array Capacity (Pmax / kWp) | 60.5 |
| | Total Weight (Tons) | 13.6 |
| | Unfolded Footprint (L*W*H/m) | 91*3.6*0.8 |
| | Folded Footprint (L*W*H/m) | 3.6*2.0*2.1 |
| | Max. Slope Limit | 1% |
| | Complete unfolding Time (mins) | 80 |
| | Complete folding Time (mins) | 60 |
| | Installation Persons | 4 |



| | | |
|---------|-----------------------------------|-----------------|
| Package | Package Products Model | SC20HQ-M-75K215 |
| | Rated Power | 215kWh |
| | Solar Array Capacity (Pmax / kWp) | 76.8 |
| | Total Weight (Tons) | 15.2 |
| | Unfolded Footprint (L*W*H/m) | 102*4.1*0.9 |
| | Folded Footprint (L*W*H/m) | 4.1*2.2*2.4 |
| | Max. Slope Limit | 1% |
| | Complete unfolding Time (mins) | 100 |
| | Complete folding Time (mins) | 80 |
| | Installation Persons | 4 |



| | | |
|---------|-----------------------------------|------------------|
| Package | Package Products Model | SC40GP-M-140K215 |
| | Rated Power | 215kWh |
| | Solar Array Capacity (Pmax / kWp) | 141.1 |
| | Total Weight (Tons) | 24.1 |
| | Unfolded Footprint (L*W*H/m) | 91*8.3*0.8 |
| | Folded Footprint (L*W*H/m) | 8.3*2.0*2.1 |
| | Max. Slope Limit | 1% |
| | Complete unfolding Time (mins) | 160 |
| | Complete folding Time (mins) | 90 |
| | Installation Persons | 8 |



| | | |
|---------|-----------------------------------|------------------|
| Package | Package Products Model | SC40HQ-M-150K430 |
| | Rated Power | 430kWh |
| | Solar Array Capacity (Pmax / kWp) | 153.7 |
| | Total Weight (Tons) | 32.4 |
| | Unfolded Footprint (L*W*H/m) | 102*8.2*0.9 |
| | Folded Footprint (L*W*H/m) | 8.2*2.2*2.4 |
| | Max. Slope Limit | 1% |
| | Complete unfolding Time (mins) | 180 |
| | Complete folding Time (mins) | 100 |
| | Installation Persons | 8 |



① Transportation Way



② Hoisting in Position



③ Open & Assembly



④ Unfold Solar PV Array



⑤ Cable Installation



⑥ Final Operation





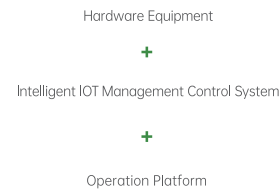
01 Planting Tray - Plant Growth Platform
Made of food-grade PP material, with holes in the cover for placing planting baskets.

02 Fresh Air System - The Respirator Of Plants
Exchanging in-external air, Ensure plant respiration.

03 Nutrient Solution Supply System - Plant Rations
Automatic control of nutrient solution circulation to ensure the nutrients needed for plant growth.

04 LED
Led Full Spectrum Grow Light - Simulates Sunlight
Mimicking the sun makes plants grow better.

05 Constant Temperature System - Temperature Control
Automatically adjust the indoor temperature precisely, so that plants can grow better.



Vegetable Growing Process



① Seeds Selection

② Germination

③ Seeding



④ Planting

⑤ Cultivation

⑥ Harvest



Intelligent Monitoring And Control Platform

Application Scenarios

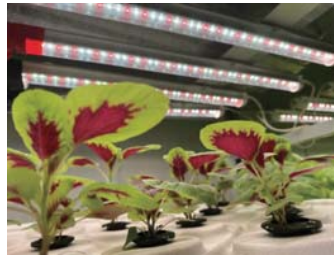


Remote project site

Belt and Road Infrastructure

Island

City + Desertified area



Basic Properties

| Module Type | TC65-18 | TC75-21 | TC64-24 |
|-------------------------------------|--|----------------|----------------|
| Product Dimensions (L*W*H/mm) | 6000*3000*2800 | 7000*5000*2800 | 6000*4000*3000 |
| Max. Outside Area (m ²) | 18 | 21 | 24 |
| Max. Inside Area (m ²) | 16.2 | 19.0 | 22.0 |
| House Weight (Kgs) | 1200 | 1350 | 1500 |
| Description of House Materials | Same as container house | | |
| Description of Windows & Doors | Can be customized made | | |
| Max. Solar Panel on Roof (W) | | 3690 | 4920 |
| Max. Solar Tile on Roof (W) | 5240 | 3780 | 5520 |
| Type of Inverter | Off grid type (with AC back-up) | | |
| Power of Inverter (kW) | 3~6 (one phase) | | |
| Type of Battery | Lithium battery (LiFePO4) | | |
| Capacity of Battery (kWh) | 3~20 | | |
| Type of Water Heater | PVT | | |
| Volume of Water Tank (L) | 150~250 | | |
| Intelligent Housing Systems | Can be customized configure | | |
| Other Furniture | Can be customized configure | | |
| Colors Available | Standard White Grey, Customized Red, Blue, Green, Camouflage, etc. | | |

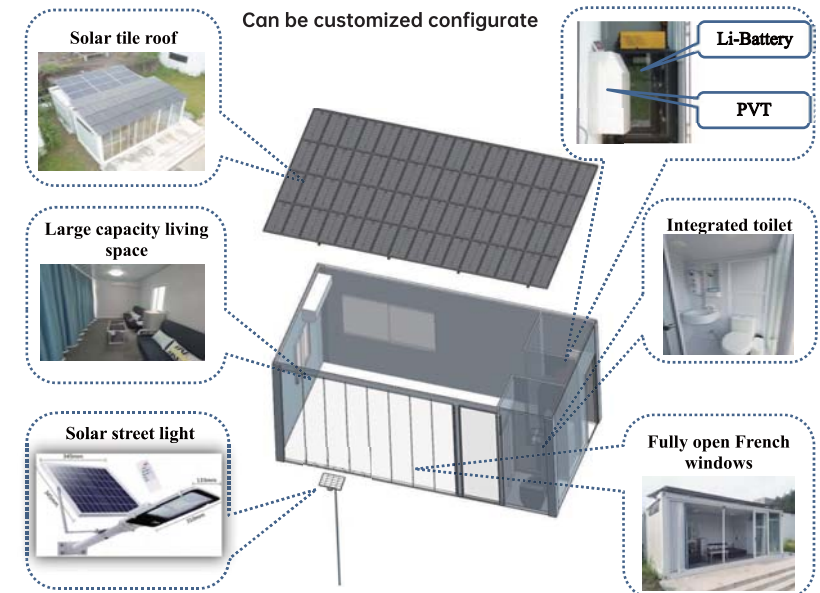
Mechanical Properties

| | |
|-------------------|-----|
| Warranty (Years) | 2 |
| Life Span (Years) | >10 |

Packing Configuration

| | | | |
|------------------------------|----|----|----|
| Container Loading Qty (20GP) | 7 | 0 | 7 |
| Container Loading Qty (40HQ) | 15 | 15 | 14 |

Schematic Diagram



Basic Properties

| Module Type | CH33-09 | CH63-18 | CH73-21 | CH64-24 |
|---------------------------------------|--|----------------|----------------|----------------|
| Product Dimensions (L*W*H/mm) | 3000*3000*2800 | 6000*3000*2800 | 7000*3000*2800 | 6000*4000*3000 |
| Max. Outside Area (m ²) | 9 | 18 | 21 | 24 |
| Max. Inside Area (m ²) | 7.8 | 16.2 | 19.0 | 22.0 |
| Max. Outside Volume (m ³) | 25.2 | 50.4 | 58.8 | 72 |
| Max. Inside Volume (m ³) | 20.2 | 42.1 | 49.4 | 61.6 |
| Weight (Kgs) | 900 | 1200 | 1350 | 1500 |
| Description of Doors | 2035*950mm / Painting steel with Bar Lock | | | |
| Description of Windows | 1100*925mm / Double Glasses POM with Security Fence | | | |
| Description of Frames | 2.3mm Stoving varnish steel | | | |
| Description of Wall Panels | 50/75mm Rock Wool Sanwish Panel | | | |
| Description of Floors | 16-18mm Fireproofing Mgo Board | | | |
| Description of Rooftiles | 0.24-0.45mm Painting Steel | | | |
| Standard Configuration-Doors | 1 | | 1 | |
| Standard Configuration-Windows | 1 | | 2 | |
| Colors Available | Standard White Grey, Customized Red, Blue, Green, Camouflage, etc. | | | |

Mechanical Properties

| | |
|---------------------------------------|-----|
| Floor Live Load (KN/ m ²) | 2 |
| Roof Live Load (KN/ m ²) | 1 |
| Wind Load (KN/ m ²) | 0.6 |
| Aseismatic Level | 8 |
| Fire-proofing Class | A |
| Warranty (Years) | 2 |
| Life Span (Years) | ≥10 |

Packing Configuration

| Packing Way | Bulk parts without pallets | | | |
|------------------------------|----------------------------|----|----|----|
| Container Loading Qty (20GP) | 12 | 7 | 0 | 7 |
| Container Loading Qty (40HQ) | 25 | 15 | 13 | 14 |

Schematic Diagram



① Bulk Transport



② Structural Installation



③ Install Wallboard



④ Install Integrated Bathroom



⑤ Arrange Furniture



⑥ Final Operation

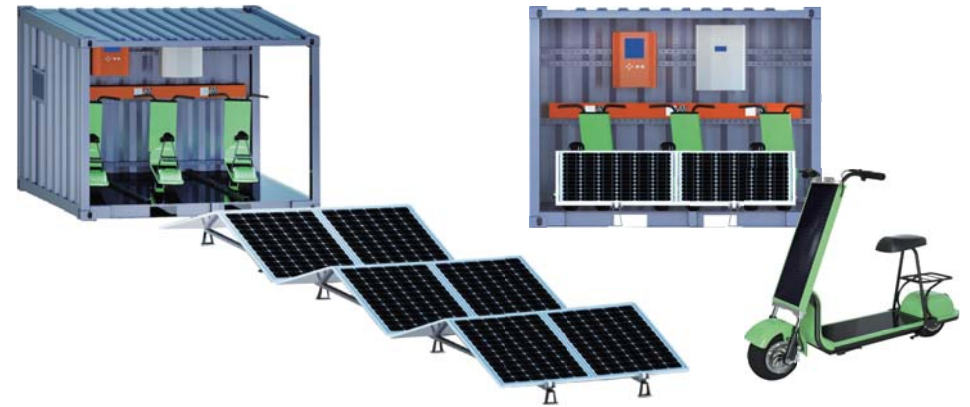


Solar Living Container

Case Sharing



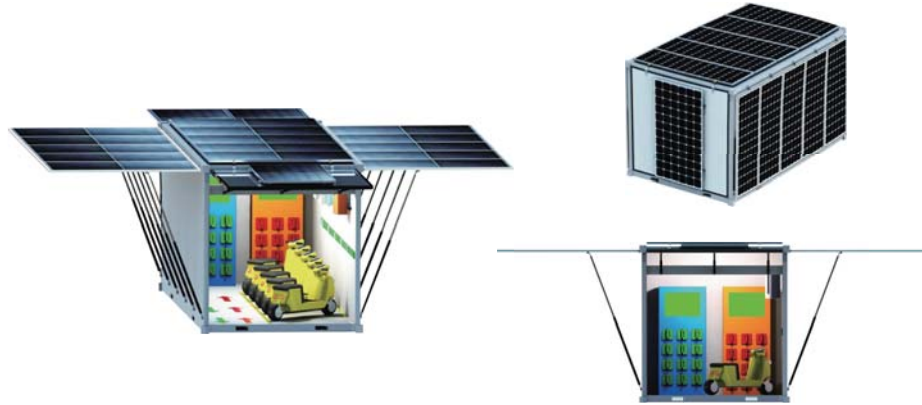
Solar EB Container



Overall Configurations

| | | | |
|-------------------|--|------------------------|--|
| SC Package | Package Products Model | SC10GP-M-5K5-EB | PV CHARGING + ENERGY STORAGE |
| | Solar Array Capacity (Pmax / Kw/p) | 5.76 | |
| | Total Weight (Tons) | 4 | |
| | Operating Temperature (°C) | -40 ~ +85 | |
| Container | Type Of Container | 10GP | Complete modules, Green energy. |
| | External Dimensions (L*w*h/mm) | 2991*2438*2591 | |
| | Container Weight (Tons) | 1.7 | |
| Solar | Solar Panel Type | TopCon Monocrystalline | SOLAR ELECTRIC VEHICLES |
| | Solar Panel Power (Pmax / Wp) | 480 | |
| | Quantity Of Solar Panels (Pcs) | 12 | |
| Inverter | Inverter Type | Hybrid Inverter | Electric vehicles with PV, long range, light charge. |
| | String Inverter Capacity (Pmax / Kw/p) | 5kw | |
| | Operating Phase | single | |
| | Quantity Of String Inverters (Sets) | 1 | |
| Battery | Module Type | LFP 5kWh/ LV | OUTLYING ISLAND USE |
| | Battery Type | LFP | |
| | Rated Capacity | 100Ah | |
| | Rated Power | 5.12kWh | |
| E-BIKE | Mileage | 35-40km | Self-use, no need for mains access can be used off the island. |
| | Item | AGAO SOLAR SCOOTER | |
| | Rated Motor Power | 350W(customizable) | |
| | Nominal Energy | 468WH | |
| | Battery | Lithium battery | |
| Maximum Speed | 25km/h | | |

Solar EB Container



Overall Configurations

| | | |
|------------------------|--------------------------------------|-------------------------------------|
| SC Package | Package Products Model | SC20GP-M-10K30-EB |
| | Solar Array Capacity (Pmax / Kw) | 9.9 |
| | Total Weight (Tons) | 5 |
| | Operating Temperature (°C) | -40 ~ +85 |
| Container | Type Of Container | 20GP |
| | External Dimensions (L*w*h/mm) | 6058*2438*2591 |
| | Container Weight (Tons) | 2.5 |
| Solar | Solar Panel Type | Monocrystalline |
| | Solar Panel Power (Pmax / Wp) | 550 |
| | Quantity Of Solar Panels (Pcs) | 18 |
| Inverter | Inverter Type | Hybrid Inverter |
| | String Inverter Capacity (Pmax / Kw) | 6kw |
| | Operating Phase | single |
| | Quantity Of String Inverters (Sets) | 1 |
| Battery | Module Type | LFP 10kWh/ LV |
| | Battery Type | LFP |
| | Rated Capacity | 200Ah |
| | Rated Power | 10.24kWh |
| | Quantity Of Batterys (Sets) | 3 |
| Power Exchange Cabinet | Model | SCPEC-10P |
| | Maximum Power | 10kW |
| | Charging Current | 0-10A |
| E-BIKE | Model | N100 MAX Collector's Edition |
| | Battery Capacity | 48V25Ah |
| | Battery Type | Lithium Battery |
| | Bms | Yes |
| | Endurance | Approximately 100km |
| | Size | 1623*698*1052mm |
| | Unlocking Method | NFC/Bluetooth/Vocal print |
| | Instrument | 5-inch TFT intelligent touch screen |

CHANGING CABINET

The power changer can easily replace the battery.

FOLDING SOLAR PV

Folding PV for easy movement and quick deployment.

CONVENIENT TRANSPORTATION

All modules can be shipped in a container.